

## MPS5502mb+ Series Configurations

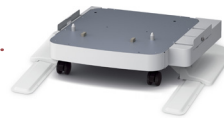
### Basic Unit

Dimensions WxDxH  
(does not include floor stabilizers)

**Basic Unit:**  
(MP5502mb+ shown:  
holds 630-sheets)  
20.6" x 23.8" x 26.6"  
(including RADF)  
PN: 62445701



### Base Options Select From:



**Caster Base**  
20.6" x 23.8" x 5.2"  
PN: 45466601



**Large Capacity Feeder**  
(holds 2,000-sheets)  
20.6" x 23.8" x 15.9"  
PN: 45393301

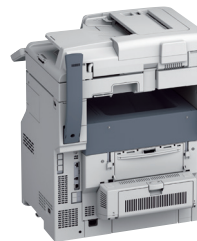


**Cabinet with Caster Base**  
(Assembly Required)  
20.6" x 23.8" x 10.6"  
PN: 45681801

### Additional Options



**Extra Paper Tray**  
(holds 530-sheets)  
20.6" x 23.8" x 5.4"  
PN: 45479001



**Wireless Option**  
20.6" x 23.8" x 26.6"  
MPS5502mb+ Wireless  
PN: 62445704

### Main Configurations



**MPS5502mb+**

- Up to 55 ppm Mono
- 630-sheets standard paper capacity, additional capacity to 3,160
- 20-sheet convenience stapler

20.6" x 23.8" x 26.6"  
105.8 lb.  
PN: 62445701



**MPS5502mbf+**

- Up to 55 ppm Color/Mono
- 1,160-sheets standard paper capacity, additional capacity to 1,690
- 50-sheet in-line stapler

20.6" x 23.8" x 42.5"  
176.4 lb.  
PN: 62445705



**MPS5502mbf+**  
PN: 62445705

- Shown with Optional Paper Tray
- 1,1690-sheets max.

Optional Tray:  
PN: 45479001



**MPS5502mbfx+**

- Up to 55 ppm Color/Mono
- 2,630-sheets standard paper capacity, additional capacity to 3,160
- 50-sheet in-line stapler

20.6" x 23.8" x 47.8"  
172.4 lb.  
PN: 62445707



**MPS5502mbfx+**  
PN: 62445707

- Shown with Optional Paper Tray
- 3,160-sheets max.

Optional Tray:  
PN: 45479001